

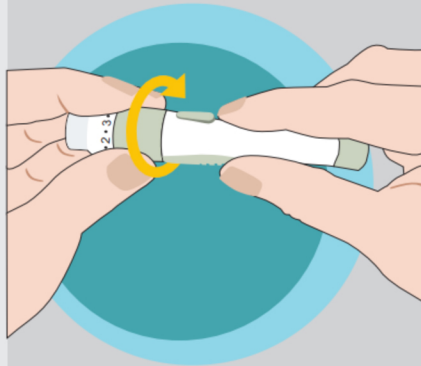
## How to use your glucometer (G-427B)?

Wash your hands with a fragrance-free soap



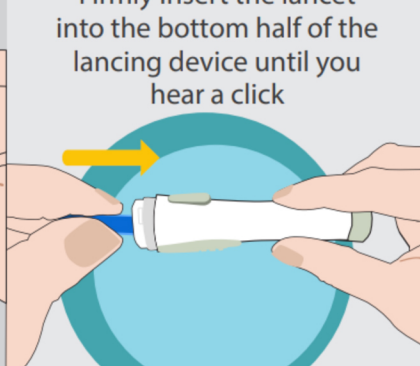
1

Screw the lancing device cap off



2

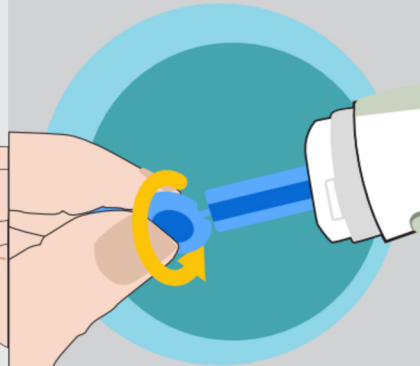
Firmly insert the lancet into the bottom half of the lancing device until you hear a click



The bottom grey portion of the pen must be pulled to lock the lancet in place.

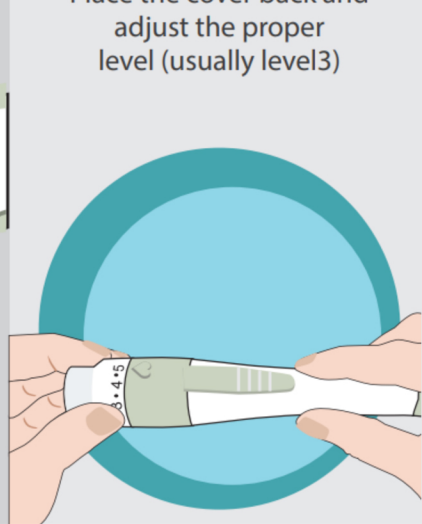
3

Twist the circular tab and pull gently to remove it



4

Place the cover back and adjust the proper level (usually level3)



5

Make sure your device is not plugged in and insert a test strip, blue side facing up into your device



6

Squeeze finger until a slight change in color



Then prick your fingertip by pressing the button under the heart symbol

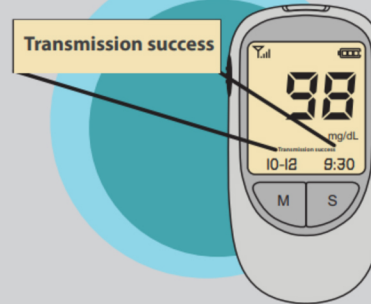
7

Place the tip of the strip near the drop of blood. Until the blood enters the strip



8

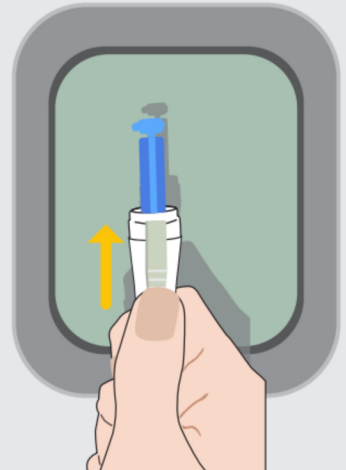
Transmission success



Countdown will be going And the left bottom corner will appear while flashing "In transit" Wait until your device displays "Transmission success" and it will shut off on its own

9

Eject the used test strip and push the ejection button to discard the used lancet in the old plastic carton



10